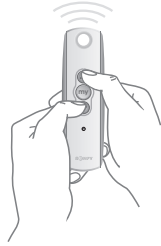


# Roll Up WireFree™ RTS Round Head Visual Reference Guide

LT30 RT Round Head for roller and sheer type shade applications.

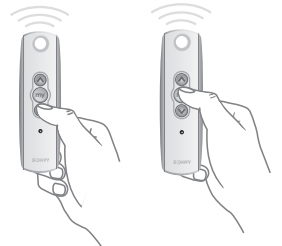
## STEP 1

To initiate programming press and hold both the **Up** and **Down** buttons at the same time until the shade jogs.



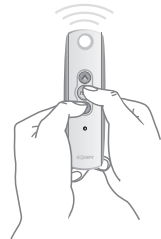
## STEP 2

Check the direction of operation. Press and hold the **DOWN** button and confirm the shade moves in a down direction (shade will operate only when button is held). To change the direction press and hold the **MY** (Stop) button until the shade jogs.



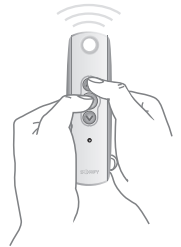
## STEP 3

Bring the shade to your desired lower limit. Press and hold both the **MY** (Stop) and **UP** buttons until the shade begins to move up, then release. Stop the shade where the upper limit should be set, you can adjust by pressing the **UP** or **DOWN** buttons.



## STEP 4

Bring the shade to your desired upper limit. Press and hold both the **MY** (Stop) and **DOWN** buttons until the shade begins to move down, then release. Stop the shade where the lower limit should be set, you can adjust by pressing the **UP** or **DOWN** buttons.



## STEP 5

Press and hold the **MY** (Stop) button until the shade jogs to confirm the limit setting.



## STEP 6

Press and hold the Program button on the back of the transmitter until the shade jogs. (Shade is now programmed and once operated will travel to its end limits.)

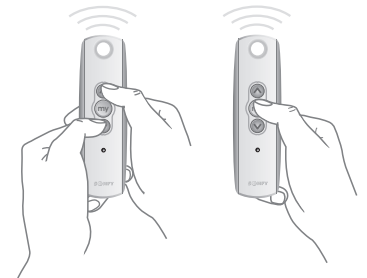


NOTE: Steps 3 and 4 may be reversed depending on initial position of shade.

### TO ADJUST LIMITS

**To change the lower limit:** Move the shade to its current lower limit position and let it stop. Press the **UP** and **DOWN** buttons simultaneously until the shade jogs, then release. Adjust to a new lower limit position. Press the **MY** button until the shade jogs, then release. Check new limit.

**To change the upper limit:** Move the shade to its current upper limit position and let it stop. Press the **UP** and **DOWN** buttons simultaneously until the shade jogs, then release. Adjust to a new upper limit position. Press the **MY** button until the shade jogs, then release. Check new limit.



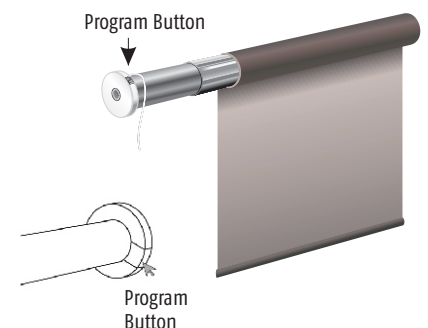
### TO ADD A REMOTE/CHANNEL

First press the programming button on the back of the already programmed remote until the shade jogs. Then press the programming button on the new remote or channel that you would like to add until the shade jogs. Check it.



### TO DELETE ALL PREVIOUS SETTINGS

Using a paperclip or pen, press and hold the Program Button, located on the motor head for 12 seconds. All transmitters and limits are now erased and will have to be reset.



Please contact SOMFY for detailed installation instructions